

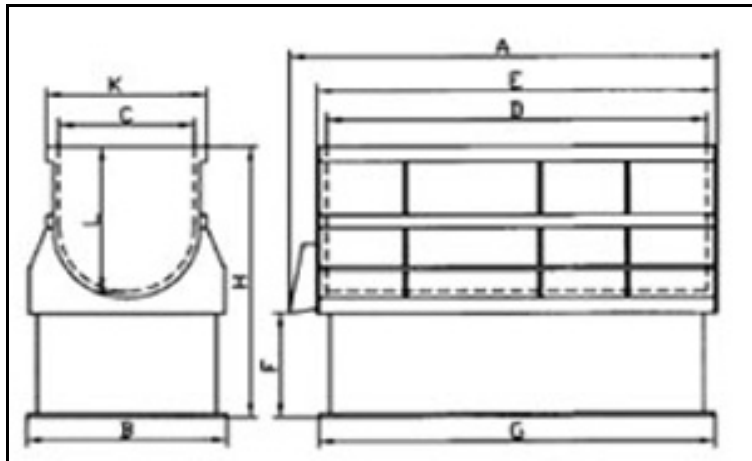
ROYSON ENGINEERING COMPANY

CTT-12 VIBRATORY FINISHER HEADER & EXHAUST PIPE POLISHING MACHINE BULLETIN #933



VARIABLE SPEED
DRIVE MOTOR
CONTROL ATTACHED
TO THE END OF TEN
FEET OF CABLE
EXITING THE
MACHINE BASE

**POLISHING
BALLS AND
POLISHING
POWDER
AVAILABLE**



- FEATURES:**
- * 9 CUBIC FOOT CAPACITY
 - * 208/240/480 VOLT
THREE PHASE 60 HERTZ
 - * 4 Kw DIRECT DRIVE
VIBRATION MOTOR
 - * URETHANE TUB LINER
 - * VARIABLE SPEED DRIVE
MOTOR CONTROL
 - * MEDIA UNLOAD DOOR
 - * SPRAY FITTING FOR
WATER LINE
 - * (2) TUB DRAINS
 - * (4) VIBRATION
ISOLATION FEET
- OPTIONS:**
- * CONTROL PANEL /TIMER
 - * ACOUSTIC LID
 - * SETTLING TANK

DIMENSIONS

CTT-12	A	B	C	D	E	F	G	H	L	K	WEIGHT
DIM IN.	60	36	24	48	53.5	20	49.5	48	24	29.5	2250 LBS

100 N. PENN ST. HATBORO, PA. 19040 USA PH #215-675-2800 FAX# 215-675-3035

COPYRIGHT ROYSON 2011