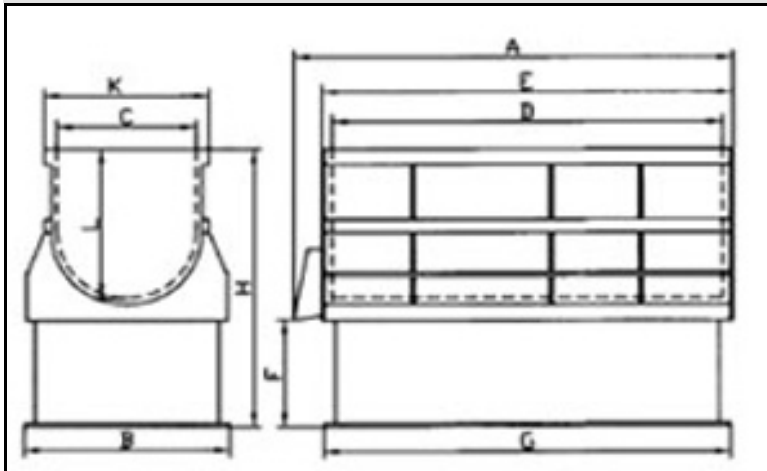


# ROYSON ENGINEERING COMPANY

CTT-12 VIBRATORY FINISHER

BULLETIN #396



## FEATURES:

- 9 CU/FT
- OPTIONAL PNEUMATIC SOUND HOOD
- 4KW DIRECT DRIVE 240/460 V
- COMPOUND PUMP
- VARIABLE SPEED
- URETHANE LINER
- 24"W 24"D 48"L WORK CHAMBER
- MEDIA DOOR

## DIMENSIONS

copyrightRoyson2010

CTT-12	A	B	C	D	E	F	G	H	L	K	WEIGHT
DIM IN.	60	36	24	48	53.5	20	49.5	46	24	29.5	2950 LBS

130 N. PENN ST. HATBORO, PA. 19040 PH #215-675-2800 FAX# 215-675-3035