

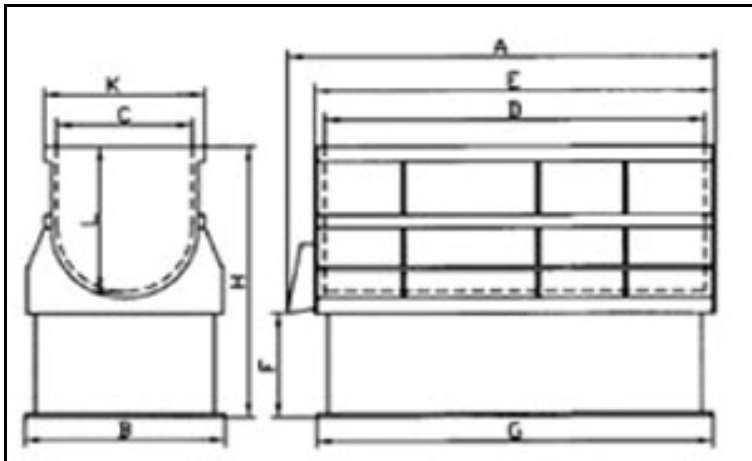
# ROYSON ENGINEERING COMPANY

## CTT-15 VIBRATORY FINISHER HEADER & EXHAUST PIPE POLISHING MACHINE BULLETIN #934



VARIABLE SPEED  
DRIVE MOTOR  
CONTROL ATTACHED  
TO THE END OF TEN  
FEET OF CABLE  
EXITING THE  
MACHINE BASE

**POLISHING  
BALLS AND  
POLISHING  
POWDER  
AVAILABLE**



### FEATURES:

- \* 12 CUBIC FOOT CAPACITY
- \* 208/240/480 VOLT  
THREE PHASE 60 HERTZ
- \* 5.5 Kw DIRECT DRIVE  
VIBRATION MOTOR
- \* URETHANE TUB LINER
- \* VARIABLE SPEED DRIVE  
MOTOR CONTROL
- \* MEDIA UNLOAD DOOR
- \* SPRAY FITTING FOR  
WATER LINE
- \*(2) TUB DRAINS
- \*(4) VIBRATION  
ISOLATION FEET

### OPTIONS:

- \* CONTROL PANEL /TIMER
- \* ACOUSTIC LID
- \* SETTLING TANK

### DIMENSIONS

CTT-15	A	B	C	D	E	F	G	H	L	K	WEIGHT
DIM IN.	66	36	24	60	65.5	20	49.5	48	24	29.5	2650 LBS

100 N. PENN ST. HATBORO, PA. USA 19040

PH #215-675-2800 FAX# 215-675-3035

COPYRIGHT ROYSON 2011